

HOSMER TERMINAL DEVICES





WE HAVE YOUR SOLUTION

Hosmer hooks are forged and machined to exacting specifications to provide a high-degree of quality and performance. As a result, Hosmer terminal devices have developed an international reputation for their rugged durability. The wide variety of configurations allows the practitioner to clinically match the patient needs and performance goals to achieve maximum independence. Founded in 1912, Hosmer-Dorrance Corporation continues the tradition of quality, durability, and performance.

SELECTING YOUR HOOK



A Standard Hooks

Hook measurements refer to the length from the top of the fingers to the base of the hook, not including the threaded stud.

B Work Hooks

For work hooks, the tool tab is not included in the measurement.

Titanium

Same strength as steel but 40% lighter. Titanium hooks are only 10% heavier than aluminum.

Aluminum

60% lighter than stainless steel and adequate strength for light to medium use. A maximum of 5 rubber bands can be used for prehension.

Stainless Steel

Heavier than aluminum and is customarily for heavy duty use. Rubber bands can be used in conjunction with steel springs for maximum prehension.

Plastisol Coating

Nontoxic plastisol is normally used on pediatric hooks to provide protection for themselves and other children. Adults also have their hooks coated to electrically insulate the device.

Nitrile Rubber Lining

Nitrile Rubber provides a secure, non-marring, holding surface and resistant to most chemicals.

Serrated Surface

A serrated surface allows for an extra secure hold suitable for heavy work.

Ball Bearings

Most Hosmer Hooks are made with precise ball bearing races. This prevents play and gives the user the sensitive proprioception touch.

PEDIATRIC HOOKS

These hooks have canted tines for better visual feedback. This allows the user to pick up paper, coins and other small fine objects from the side with ease.

The UCLA CAPP TD was designed for children. Made of molded plastic, this terminal device provides a wide palmar face with a tactile, resilient covering allowing a secure hold on odd shapes such as toys. An internal spring provides prehension. The spring can be changed to accommodate a light or heavy prehension.



1	Model 12P Hook Child Size Length: 2-3/4in / 7cm Weight: 3oz / 85g Stainless Steel Plastisol Coating	55057 Caucasian, Right 55056 Caucasian, Left 54282 Dark Brown, Right 54281 Dark Brown, Left
2	Model 10X Hook Child Size Length: 3-3/8in / 8.6cm Weight: 3oz / 85g Aluminum Nitrile Lined	55054 Right 55053 Left 61972 Right, 12mm 61985 Left, 12mm
3	Model 10P Hook Child Size Length: 3-3/8in / 8.6cm Weight: 3.5oz / 99g Aluminum Plastisol Coating	55051 Caucasian, Right 55050 Caucasian, Left 54284 Dark Brown, Right 54283 Dark Brown, Left 61977 Caucasian, Right, 12mm 61984 Caucasian, Left, 12mm 62327 Dark Brown, Right, 12mm 62329 Dark Brown, Left, 12mm
4	UCLA CAPP Terminal Device Child Size Length: 2-15/16in / 7.5cm Weight: 3oz / 85g Delrin Can be used for left or right	71630 Caucasian, Soft 71620 Caucasian, Regular 71633 Caucasian, Heavy Duty 59322 Dark Brown, Soft 59321 Dark Brown, Regular 71634 Dark Brown, Heavy Duty
5	Model 99X Hook Small Adult Size Length: 3-7/8in / 9.8cm Weight: 3oz / 85g Aluminum Nitrile Lined	55044 Right 55043 Left 61976 Right, 12mm 61983 Left, 12mm
6	Model 99P Hook Small Adult Size Length: 3-7/8in / 9.8cm Weight: 3.5oz / 99g Aluminum Plastisol Coating	53604 Caucasian, Right 52946 Caucasian, Left 56872 Dark Brown, Right 56871 Dark Brown, Left 61974 Caucasian, Right, 12mm 61980 Caucasian, Left, 12mm 62326 Dark Brown, Right, 12mm 62328 Dark Brown, Left, 12mm
	Nitrile Retreading Retread available for nitrile rubber lined fingers	54950 Nitrile Retreading

STANDARD CANTED HOOKS

These hooks have canted finger tines for better visual feedback. The canted shape allows the user to pick up paper, coins and other small fine objects from the side with ease.



1	Model 5 Hook Adult Size Length: 4-7/8in / 12.4cm Weight: 8oz / 227g Stainless Steel Serrated Surface	55004 Right 55003 Left
2	Model 5X Hook Adult Size Length: 4-7/8in / 12.4cm Weight: 7.5oz / 213g Stainless Steel Nitrile Lined	55010 Right 55009 Left
3	Model 5XA Hook Adult Size Length: 4-7/8in / 12.4cm Weight: 4oz / 113g Aluminum, Nitrile Lined Can be anodized in red, blue, black, or gold for additional charge.	55013 Right 55012 Left 61973 Right, 12mm 61981 Left, 12mm
4	Model 5XTi Hook Adult Size Length: 4-7/8in / 12.4cm Weight: 4.176oz / 118.39g Titanium, Nitrile Lined	62331 Right 62332 Left
5	Model 8 Hook Medium Adult Size Length: 4-5/8in / 11.7cm Weight: 8oz / 227g Stainless Steel Serrated Surface	55029 Right 55028 Left
6	Model 8X Hook Medium Adult Size Length: 4-5/8in / 11.7cm Weight: 7.5oz / 213g Stainless Steel Nitrile Lined	55032 Right 55031 Left
7	Model 88X Hook Medium Adult Size Length: 4-5/8in / 11.7cm Weight: 4oz / 113g Aluminum Nitrile Lined	55036 Right 55035 Left 61975 Right, 12mm 61982 Left, 12mm
	Nitrile Retreading Retread available for nitrile rubber lined fingers	54950 Nitrile Retreading

LYRE SHAPE FINGER HOOKS

These hooks have symmetrical finger tines for cylindrical grasp on objects, such as bottles, cans and other round objects.



1	Model 555 Hook Adult Size Length: 5-1/4in / 13.3cm Weight: 4.5oz / 121g Lyre Shape, Aluminum, Nitrile Lined	55060 Right 55059 Left 61979 Right, 12mm 61978 Left, 12mm
2	Model 555-SS Hook Adult Size Length: 5-1/4in / 13.3cm Weight: 8.5oz / 241g Lyre Shape, Stainless Steel, Nitrile Lined	55063 Right 55062 Left
	Nitrile Retreading Retread available for nitrile rubber lined fingers	54950 Nitrile Retreading

WORK HOOKS

These hooks have canted tynes to allow for a number of applications. The variable openings between the fingers help accommodate the different diameter agricultural tools. All of the work hooks have serrated fingers that provide a more secure holding surface with a distal tab for precision grasp. The tab used on models 7, 7LO, and 6 have a nail slot for holding nails or wire, and an extension designed for holding knives. The square cutout in the guard allows the user to hold square shanked tools such as a screwdriver. The Model 6 Work Hook has a back lock feature that prohibits involuntary opening. This is ideal for repetitious functions requiring less body effort. To unlock the backlock the user simply activates the control cable.



3	Model 3 Work Hook Adult Size Length: 4-5/8in / 11.7cm Weight: 10oz / 284g Stainless Steel	55001 Right 55000 Left
4	Model 7 Work Hook Adult Size Length: 4-7/8in / 12.4cm Weight: 10.5oz / 298g Stainless Steel	55022 Right 55021 Left
5	Model 7LO Work Hook Adult Size Length: 5in / 12.7cm Weight: 11oz / 312g Stainless Steel	55025 Right 55024 Left
6	Model 6 Work Hook Adult Size Length: 5-1/2in / 14.9cm Weight: 14oz / 397g Stainless Steel	55016 Right 55015 Left

VARIABLE FORCE HOOKS

The APRL and Sierra 2-Load hooks have replaceable lyre shaped fingers and special mechanisms which eliminate the use of rubber bands and permit preselection of pinch force.



1



2

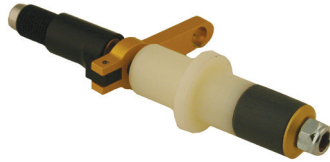
1	APRL Voluntary Closing Hook Length: 6-3/8in / 16.2cm Weight: 8.6oz / 243g Nitrile Lined	52601 Right 302-00 52602 Left 302-01
2	Sierra 2-Load Voluntary Opening Hook Length: 5in / 12.7cm Weight: 12.5oz / 354g Nitrile Lined	52431 Right 21-00 52432 Left 21-01
	Nitrile Retreading Retread available for nitrile rubber lined fingers	54950 Nitrile Retreading



3



4



5

3	Baseball Glove Attachment	55039	Right
		55027	Left
4	Driving Ring Attachment	56394	Driving Ring Attachment
5	Bowling Attachment	51148	Left or Right





Hosmer • 800.827.0070 • Fax: 408.379.5263

Fillauer LLC • 800.251.6398 • Fax: 423.629.7936

Centri® • +46 8 505 332 00 • Fax: +46 8 505 332 05

www.fillauercompanies.com

PR108-07/06-08/24/10